

The
❖❖ OFFICIAL MAGDALENE
BAME
CAMBRIDGE GUIDE ❖❖



created by *Michelle and Tally*
(your BME officers)



TABLE OF CONTENTS



01 **ABOUT US**

02 **EVENTS WE HAVE HELD SO FAR**

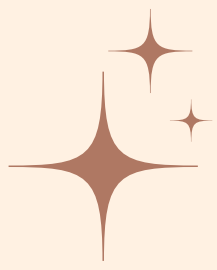
03 **SOCIETIES AT CAMBRIDGE AND MAGDALENE**

04 **BUSARIES/ FINANCIAL SUPPORT AT
CAMBRIDGE AND MAGDALENE**

05 **BAME WELFARE SUPPORT**

06 **CULTURAL HOTSPOTS/PLACES, HAIR SHOPS**

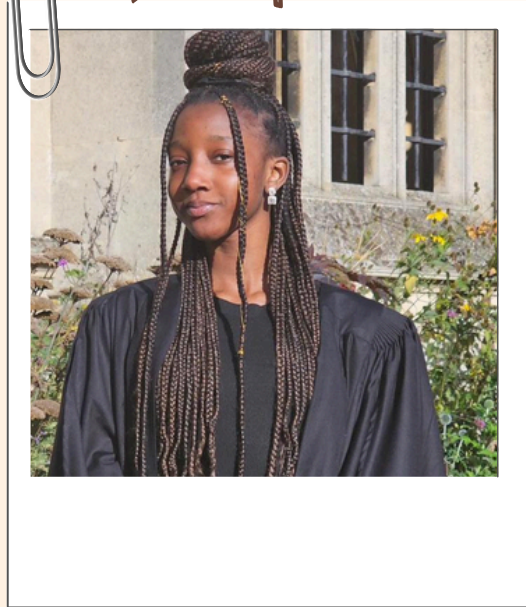
07 **INFORMATION ON FAITH/RELIGION**



ABOUT US



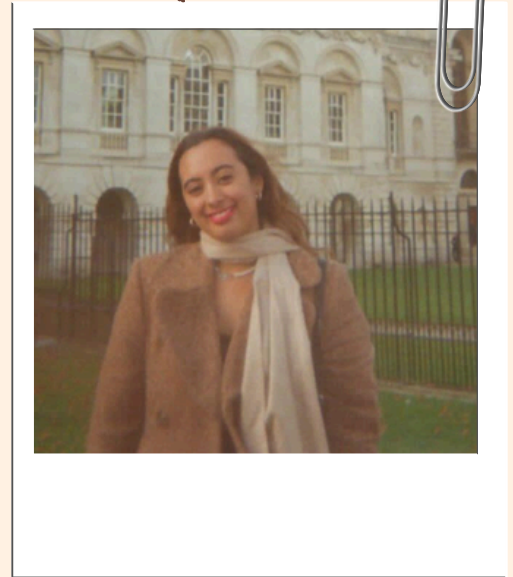
MICHELLE



Second year HSPS Student

Fun fact: I love to sing

TALLY



Second year English student

Fun fact: I love to act and direct

OUR MISSION AND VISION



We aim to create an inclusive and accessible environment at Magdalene for BAME individuals and those from varying different religious backgrounds. We want everyone to feel like they have a safe space, someone to talk to and somewhere to belong.

EVENTS WE'VE HELD SO FAR

TEA AND TALK:



MAGDALENE POETRY SOCIETY BME WRITING WORKSHOP



BAME THEATRE TRIP TO WATCH THE FAIRVIEW PRODUCTION (COLLABORATION WITH 16 OTHER COLLEGES)



MOVIE NIGHT



BAME FORUM

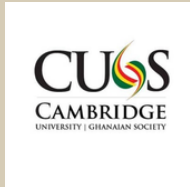


and we have many more events planned for this term!

SOCIETIES

FOR MORE INFORMATION ABOUT
OTHER SOCIETIES, PLEASE REFER
TO THE LINK AT THE BOTTOM OF
PAGE 6

01 CULTURAL/FAITH BASED SOCIETIES



Ghana Society

ig:
email: ghanaian@cusu.cam.ac.uk



Sudanese Society

ig: cusudsoc
email: sudsoc@cusu.cam.ac.uk



Nigerian Society

ig: cuns_cantab
email: nigeria@cambridgesu.co.uk



Cambridge University Christian Fellowship (CUChF)

ig: cuchristianfellowship



African Caribbean Society (ACS)

ig: cambridgeacs
website: <https://www.cambridgeafrican.org/>



Cambridge University Islamic Society (CUISoc)

ig: cu_isoc
website: <https://isoc.co.uk>



Black Girls Space (BGS)

ig: cu.bgs



Cambridge Nepali Society

ig: cambridgenepsoc
email:
nepali@cambridgesu.co.uk



Cambridge Tamil Society

ig: cutamilsoc
website:
<https://cutamilsoc.soc.srcf.net/>



Hindu Cultural Society

ig: camhindusoc



Pakistan Society

ig: cambridge_paksoc
email: paksoc@cambridgesu.co.uk



Cambridge Inter-Collegiate Christian Union (CICCU)

ig: cambridge_cu
website:
<https://ciccu.org.uk>



Christians At Uni Society

ig:
cambridgechristianstudents



Sikh Society

ig: cusikhsoc

AND MORE SOCIETIES

MORE INFO ABOUT SOCIETIES: [HTTPS://WWW.CAMBRIDGESU.CO.UK/OPP/ORTUNITIES/SOCIETIES/](https://www.cambridgesu.co.uk/opp/ORTUNITIES/SOCIETIES/)

02 HOBBIES/INTERESTS BASED SOCIETIES:



ACS Composers
ig: theacscomposers



Bubble tea Society
ig: cam.bubbletea



Film Association
ig: cufilmassociation



Chess Club
ig: cambridgeuniversity chessclub



Fem Tech Society
ig: cambridgefemtech



K-POP Society
ig: cukpopsoc



Musical Theatre Society
ig: cumtscambridge
website: <https://www.cumts.co.uk/>



Engineers without borders
ig: ewbcambridge

03 SPORTS BASED SOCIETIES



Ballet Club
ig: cambridgeuniballetclub
website: [cambridgeuniversityballetclub](http://cambridgeuniversityballetclub.com)



Athletic Club
ig: cuac
website: <https://www.cuac.org.uk/>



Iceskating Club
ig: [cam.uni.ice.skating](https://www.cam.uni.ice.skating)



Kickboxing society
email: kickboxing@cusu.cam.ac.uk
website: <https://cukbs.soc.sref.net/>

SOCIETIES AND OPPORTUNITIES AT *Magdalene*



Annual Sports Day with our sister college, Magdalen College Oxford

Squash Club



Magdalene Boat Club

ig: magdaleneboatclub

Magdalene Choir



Free Punting



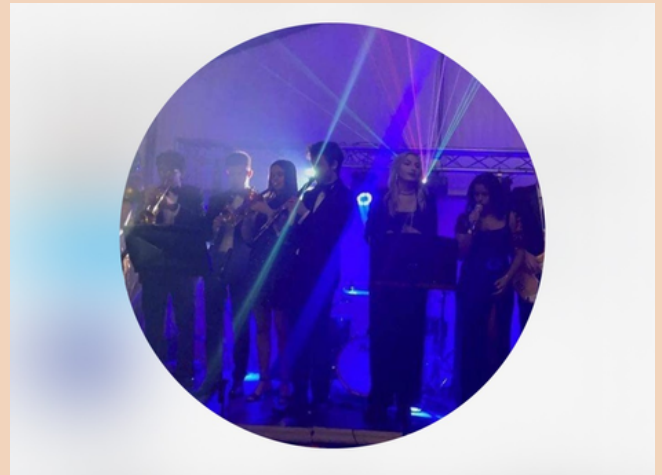
**Tea at 3 free desserts and tea
at our college library social
space
every Wednesday at 3pm!**



Pepys Library tour



Magdalene Jazz Band



Magdalene Poetry Club



BUSARIES/FINANCIAL SUPPORT AT CAMBRIDGE AND MAGDALENE

**MORE INFORMATION ON
THE UNIVERSITY WEBSITE
AND THE MAGDALENE
WEBSITE ON MAGNET!**

Cambridge:

Cambridge Bursary Scheme:

- receive up to **£3,500 per year** in financial assistance
- no repayment required
- there is no additional application for this
- Larger bursaries are available for medical students in their clinical years as well as students who meet the requirements for free school meals, and independent students which includes care leavers.
- **To be eligible:** you must have applied for and been offered a student finance loan, with loan approval by June 30th at the close of the academic year, and a household income below £62,215 annually.

<https://www.cambridgestudents.cam.ac.uk/cambridge-bursary>

Crane Fund:

- financial assistance of up to **£1800 per academic year**
- For students who need financial support/assistance with medical expenses

<https://www.cambridgestudents.cam.ac.uk/fees-and-funding/financial-assistance/crane-fund>

Choral Awards:

- receive a small financial award each academic year
- most colleges, also provide a subsidy for singing lessons.
- Other forms of support, varies by colleges
- **Eligibility:** for students who are in the college choir and show active commitment by attending rehearsals etc

<https://www.undergraduate.study.cam.ac.uk/finance/music-awards/choral-awards>

Magdalene: (accessible via MagdNet)

Estorick Italian Travel Scholarships (to Italy, restricted to students who have never visited there):

Provides up to £500 are available for students visiting Italy for the first time. The report must be exactly 2,500 words and include photographs and/or drawings

Instrumental Awards Scheme:

The Instrumental Awards Scheme supports talented musicians in achieving a high level of performance in chamber music. Awarded students hold the title for one year and receive a small financial award (an 'exhibition'), professional ensemble coaching, access to masterclasses, recital opportunities, and a subsidy for instrumental lessons.

Zak Ghazi-Torbati Travel Scholarships:

Awards of up to £250 are available to support participation in comedic and theatrical productions outside of Cambridge, in particular at the Edinburgh Fringe Festival.

The RF Kuang Writing Bursary:

The RF Kuang Writing Bursary which is funded by a generous Member, offers Magdalene students the opportunity to achieve a £4,000 award to undertake a creative writing project during the summer research period.

BAME WELFARE SUPPORT:



Action for Black and Minority and Ethnic Communities Cambridgeshire (ABMEC C.I.C)

For some background context, ABMEC CIC is a community funded by the Big Lottery. Based in Cambridgeshire, they aim to provide support and advice to Black and Minority Ethnic (BME) Communities, migrant workers and asylum seekers to improve life chances for integration into British Society.

ABMEC CIC works to strengthen existing and new communities whose members will benefit from cultural events designed to promote community cohesion, workshop activities and basic skills training. Contact details are provided below:

Contact: Sylvia Lingwood, Diep Hoang

Telephone: 01223 257700

Email: sylvialingwood@talktalk.net, diephoang2@hotmail.com

For more information: <http://www.supportingcambridgeshire.com/whatwedo.htm>

Cambridge Ethnic Community Forum (CECF)

CECF provides a cultural diversity service that helps promote an understanding between people from different ethnic groups and help them be a natural part of Cambridge life. We give special social, cultural, moral and practical support to groups and develop particular projects where needed. Contacts details are provided below.

Telephone: 01223 315877

Email: cecfenquiries@cecf.co.uk

For more information: <https://cecf.co.uk/>



The Black and Minority Ethnic (BME)

Campaign represents, supports, and advocates for all students of colour at the University of Cambridge. They bring together organisations from across the University to campaign for an inclusive Cambridge.

They organise events to build communities of care and compassion for BME students, coordinate with JCR/MCR reps and societies to strengthen BME student representation, and campaign on the big issues that matter to BME students - especially the lack of targeted mental health support for BME students.

More details can be found via the SU website: <https://www.cambridgesu.co.uk/bme-campaign/>

Muslim Youth Helpline:

This helpline provides faith and culture based support and guidance. It is accessible through the phone, Whatsapp, email or live chat.

Available from 4pm-10pm, 365 days a year.

Contact: 0808 808 2008

More information can be found here: <https://myh.org.uk>

CULTURAL HOTSPOTS/PLACES

Yemtox: Stocks Afro-Caribbean food items and groceries. Also deliver groceries.

Location: Norfolk St

Toft Shop: Stocks South-African food items. It's quite far, however one you can deliver groceries!

Location: High St Tof

Al Amin: International Food Store & Halal Grocery

Location: Mill Road

Spice Gate: Small International Supermarket. Also stocks Halal food items.

Location: Mill Road

Midan World Foods: International Supermarket

Location: Histon Road (which is near Aldi)

Iqbro Halal Grocers: Grocers/Butchers, also Halal

Location: Histon Road (opposite Aldi)



HAIR SHOPS

Dukels Ltd: Afro Hair Shop. Stocks most popular hair brands, products and beauty items.

Location: Regent St

Tughaa Hair Service – Mama Sara. Contact via phone. Offers braids, twists and locs

Various barber shops. A popular option is **Smart Services Ltd.** It's a tech shop, but they also run a small barbershop.

Location: Regent St

The Black Superstore: Online Afro-Caribbean superstore.

To find the discount code check the ACS Members Facebook Group

(DISCLAIMER: only accessible you are an ACS member)

INFORMATION ON FAITH AND RELIGION

Some Churches at Cambridge:
(the churches below are churches that often many Cambridge students attend)

Holy Trinity.

**Address: 24 Market Street,
Cambridge CB2 3NZ**

About a 7 minute walk from Magdalene, in the town centre. Sunday services at 10:30am - 12pm and also 5:30pm-7pm. Services are livestreamed as well as in-person.

Kingsgate:

**Address: West Rd Concert
Hall, Cambridge**

About a 20-25 minute walk from Magdalene near Sigdwick Site. Sunday services from 10:00am. Services are livestreamed as well as in-person.

RCCG City of David:

Address: 347 Cherry Hinton Road, Cambridge CB1 8DH

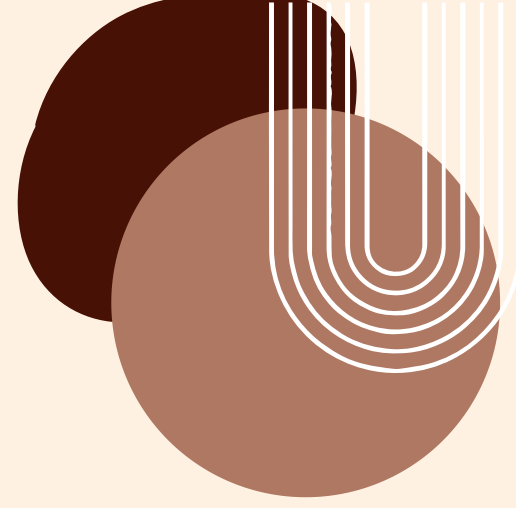
About a 30 minutes bus journey from Magdalene. **Take the bus 3 Cherry Hinton from Emmanuel Street (only a 10 minute walk from Magdalene).** Sunday services take place from 11:00am, Sunday school starts at 10:20am. Services are livestreamed as well as in person.

Magdalene Christian Union: Prayer and Bible study from 8PM at A6 (Chaplain's office) with desserts and tea!

**For more information check out their
instagram: magdalene_college_CU**

Cambridge University Christian Fellowship (CUCF) also holds praises and worship events, conferences, Bible study, prayer meetings etc!
**For more information check out their
instagram: cuchristianfellowship**

INFORMATION ON FAITH AND RELIGION



Prayer room at Magdalene: F4

Other prayer spaces:

- Multi-Faith and Reflection Centre, West Cambridge
- Faculty of Mathematics (Quiet room Pavillion F)
- Faculty of History
- Student Services Centre
- Addenbrookes Hospital Multi Faith Space

ISOC (Cambridge Islamic Society) holds Friday prayers. Some college and uni buildings also have prayer rooms.

More information about ISOC can be found here:

<https://isoc.co.uk/#:~:text=Cambridge%20University%20Islamic%20Society.%20A%20HOME%20FOR%20MUSLIMS%20AT%20CAMBRIDGE.>

Some Mosques at Cambridge:

Cambridge Central Mosque

**Address: Vincent Court, 307 Mill
Road, Cambridge CB1 3DF**

Masjid Al Ikhlas &
Cambridge Islamic Centre

**4, Devonshire Road,
Cambridge CB1 2BH**

INFORMATION ON FAITH AND RELIGION

Beth Shalom Reform Synagogue

Address: Auckland Road, Cambridge, CB5 8DW

Cambridge Traditional Jewish Congregation

Address: 3 Thompson's Lane, Cambridge, CB5 8AQ

Cambridge Buddhist Centre

Address: 38 Newmarket Road, Cambridge, CB5 8DT

Cambridge Gurdwara

Address: 150 Arbury Road, Cambridge, CB4 2JQ



CONTACT US:

email: **jcr-bme@magd.cam.ac.uk**

IG: **magdsbame**

JCR website:

[Magdalene College JCR \(cam.ac.uk\)](http://MagdaleneCollegeJCR.cam.ac.uk)

MAGDS website:

[Magdalene College \(cam.ac.uk\)](http://MagdaleneCollege.cam.ac.uk)